

INDEXER WIZARDS

VERSION 2.1.1

INSTALLATION

MANUAL



A twisted tapered six sided polygon and a carving wrapped around a cylinder

Wizards by Rich

www.wizardsbyrich.yolasite.com

September 13, 2009

Table of Contents

Installation	1
Installing the Indexer Wizards	1
Indexer Wizards Setup	8
Changes in Version 2.1 from Version 2.0	12
Requirements.....	12

Table of Figures

Figure 1: Another version of this product is already installed.....	1
Figure 2: Installation first screen	2
Figure 3: Create shortcuts.....	3
Figure 4: Selecting the installation folder	4
Figure 5: Confirm installation.....	5
Figure 6: Installing.....	6
Figure 7: Installation complete	7
Figure 8: Demo screen	8
Figure 9: Registration screen	9
Figure 10: Indexer Wizards start screen	10
Figure 11: Setup screen.....	11

Installation

Installation of the Indexer Wizards is simple and straight forward. There are three steps to be completed.

1. The installation program will automatically check that the Microsoft .Net framework is installed. If it is not installed follow the prompts to download and install the framework.
2. Install the Indexer Wizards.
3. Setup the Indexer Wizards.

Installing the Indexer Wizards

The Indexer Wizards install file is “Indexer Wizards Setup.msi”. Double click on the file and the Indexer Wizards installation will start. If the Indexer Wizards have already been installed you will be asked to uninstall them before they can be installed again as in figure 1.

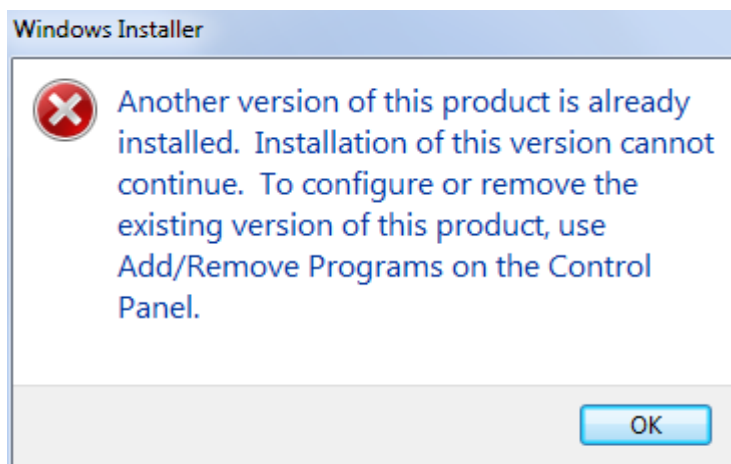


Figure 1: Another version of this product is already installed

If the Microsoft .Net framework is not installed the installation will detect it and prompt you to install it. Just follow the prompts (you will have to be online to the internet to do this). After the Microsoft .Net framework is installed you will have to start the installation again by double clicking on the “Indexer Wizards Setup.msi” file. The first Indexer Wizards install screen will look like figure 2.



Figure 2: Installation first screen

Press Next to continue. The screen shown in figure 3 will appear.

This screen is used to select what shortcuts you want to create. You should create at least one of them so that you can easily start the Indexer Wizards.

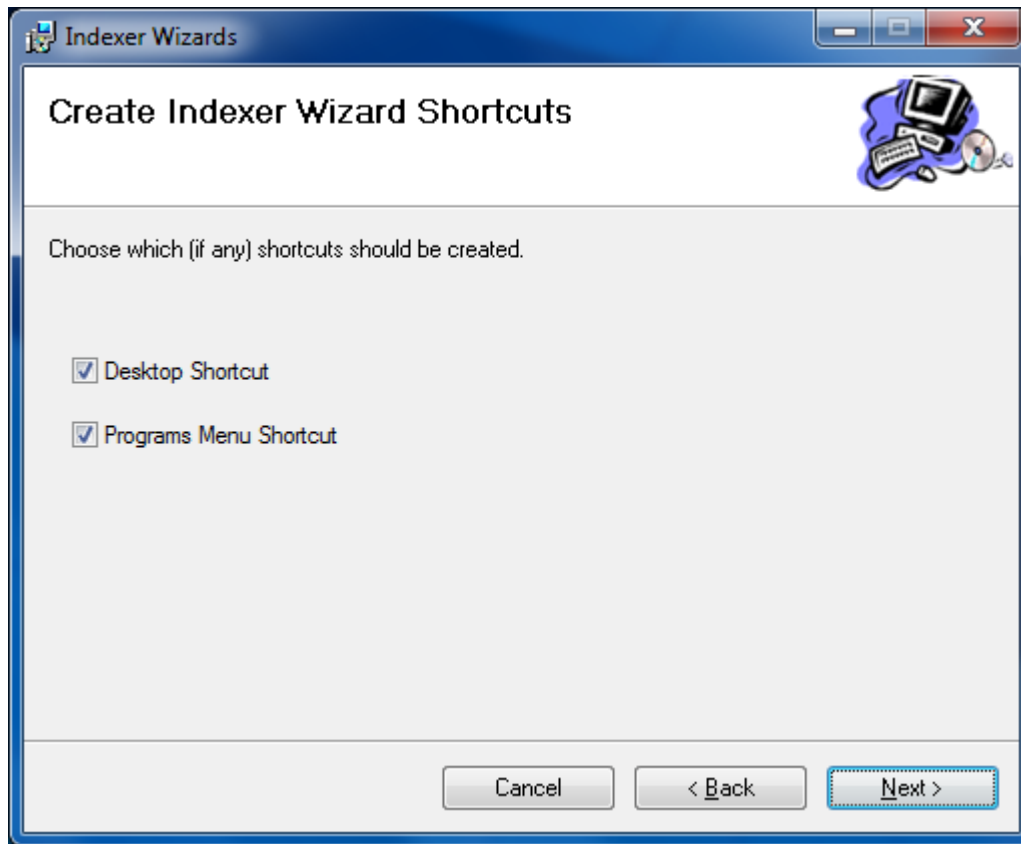


Figure 3: Create shortcuts

Press Next. The screen shown in figure 4 will appear. This screen allows you to select the installation folder. The default shown will be ok for most people. Here, you may also select whether you wish to install the Indexer Wizards for just yourself or for everyone that uses the computer. For most people the default is correct.

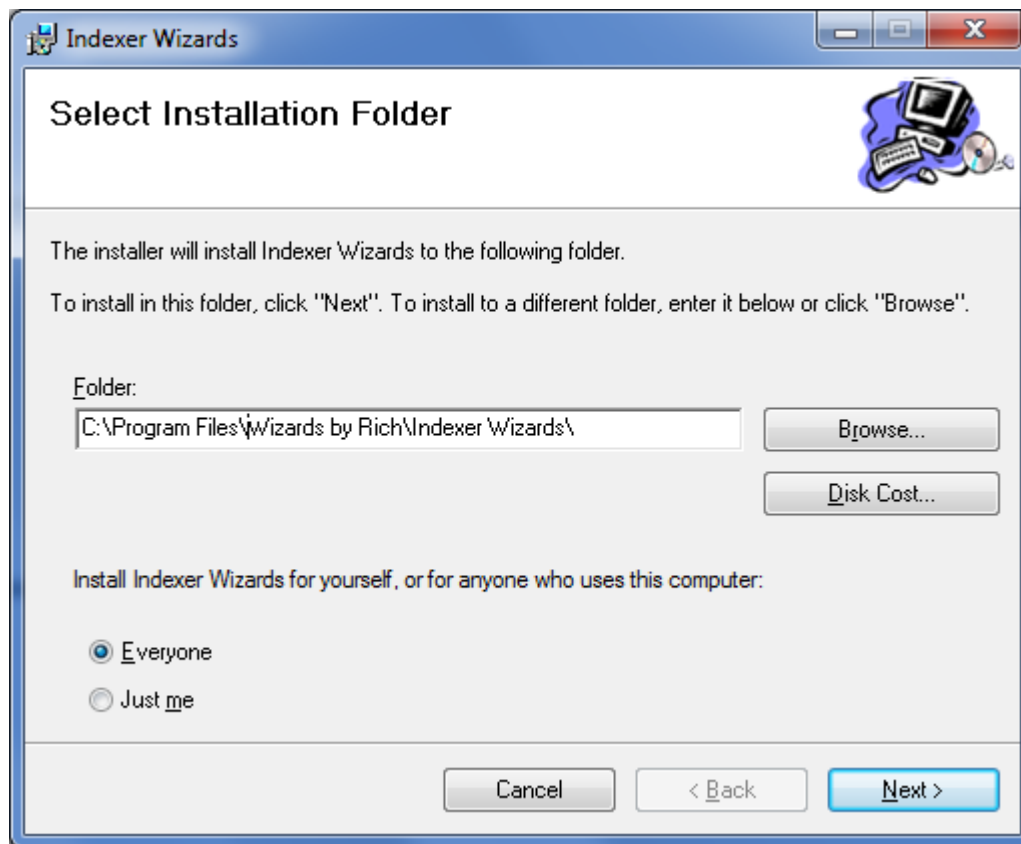


Figure 4: Selecting the installation folder

Press Next to continue and the screen shown in figure 5 will appear.

At this point the installation is ready to proceed.

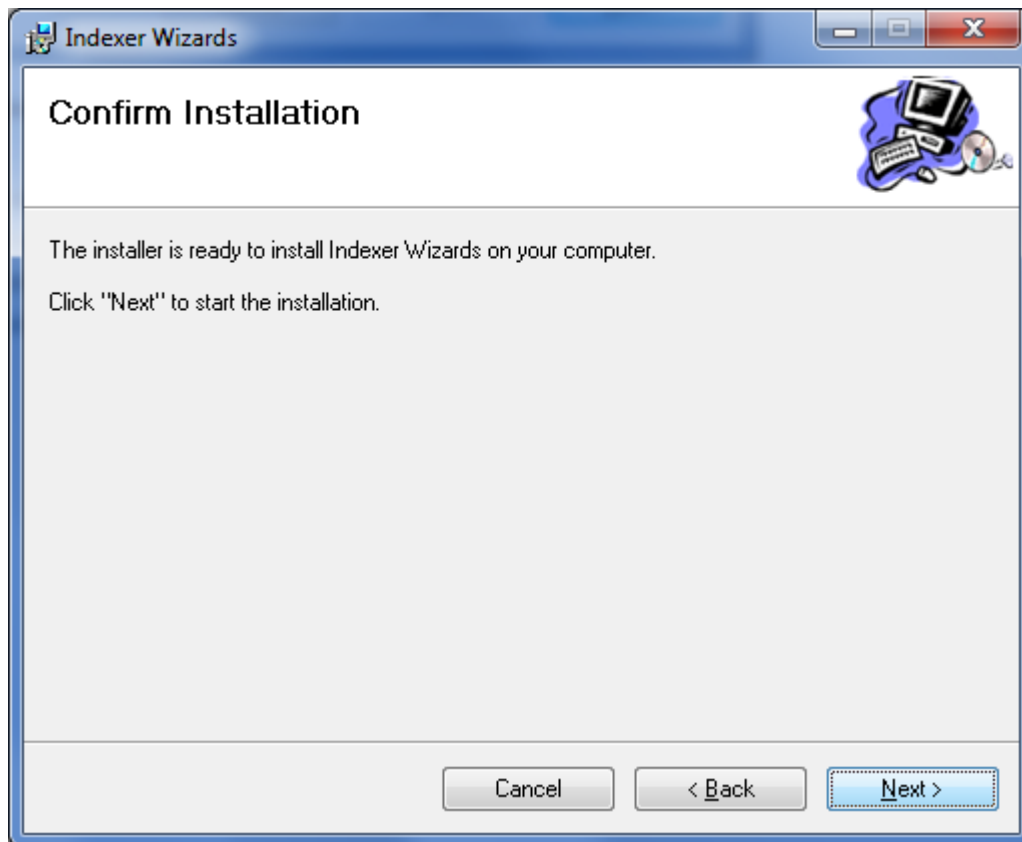


Figure 5: Confirm installation

Click Next to start the installation. The screen shown in figure 6 will appear. The Indexer Wizards are now being installed.

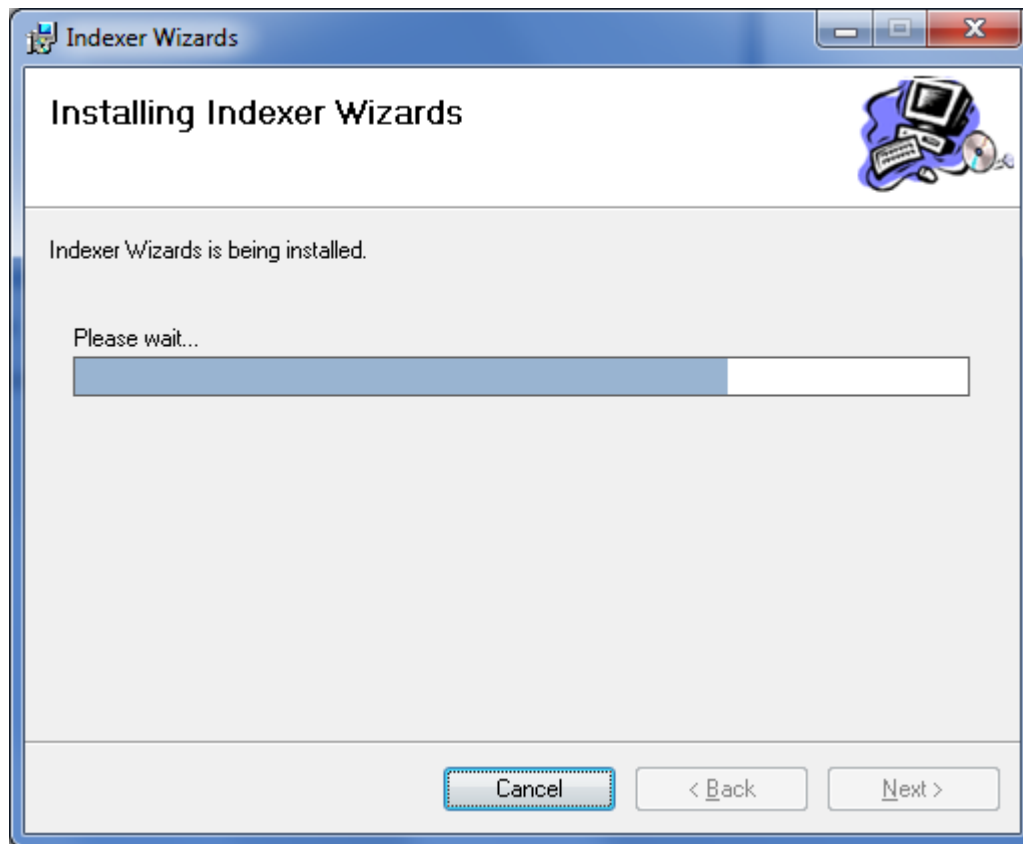


Figure 6: Installing

When the installation is completed the screen shown in figure 7 will appear.

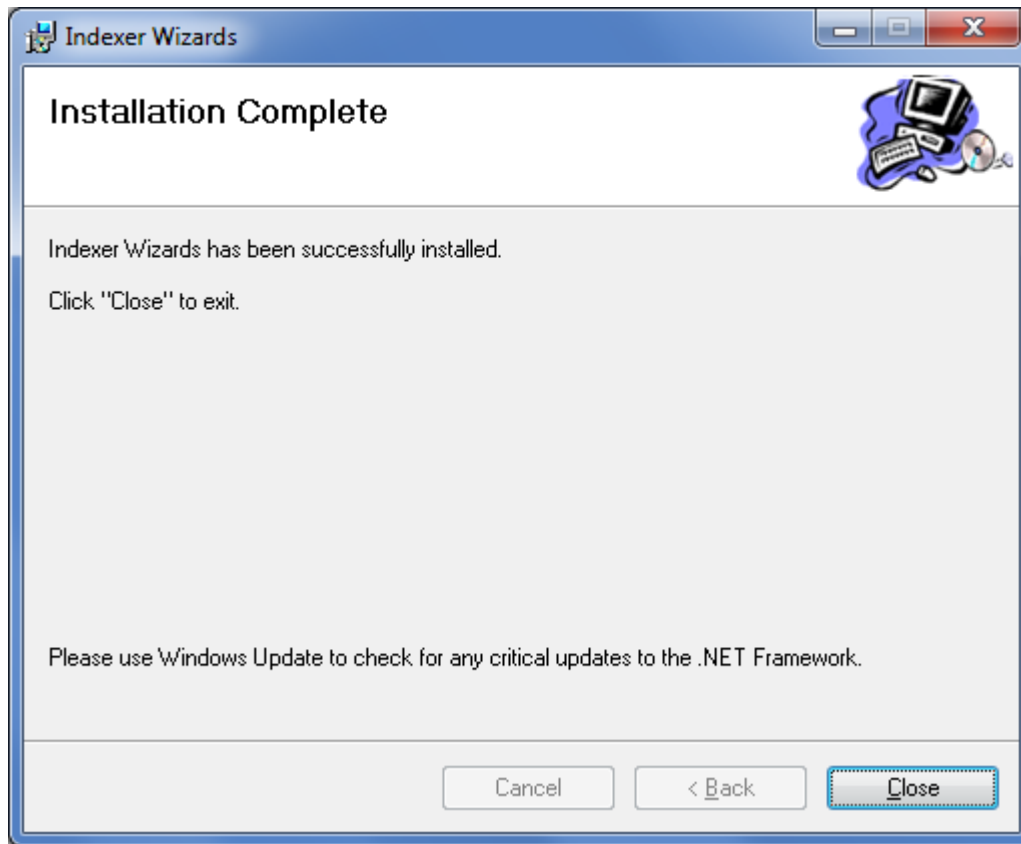


Figure 7: Installation complete

The installation is now complete. Press Close to finish.

Indexer Wizards Setup

Start the Indexer Wizards. If the Indexer Wizards is a demo copy or is not yet registered, the screen in figure 8 will appear. If it is registered the Indexer Wizards main screen in figure 10 will appear.

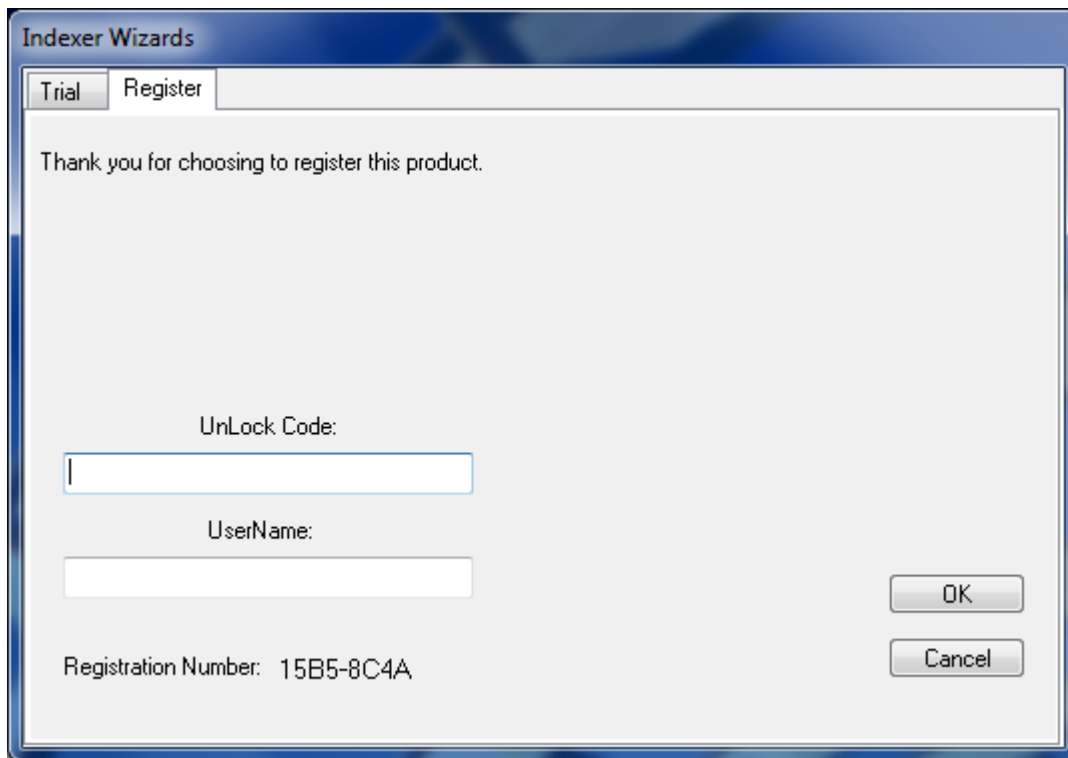


Figure 8: Demo screen

The demo Indexer Wizards will work for seven days after installing it. There are no other limitations on the demo. If you wish to use the Indexer Wizards prior to registering it, just press “Try” and you will be taken to the Indexer Wizards main screen in figure 10.

The demo copy can be registered by sending your PayPal payment, your name and the registration number from the above screen to your distributor (rgoldner@iname.com). The distributor will send you back an unlock code. As a convenience you may press the “Order” button and you will be taken to a web page from which you may place your order.

Once you have the registration information press the “Register” tab and the screen in figure 9 will appear.

The image shows a software registration window titled "Indexer Wizards". It has two tabs: "Trial" and "Register", with "Register" being the active tab. The main area contains the text "Thank you for choosing to register this product." Below this, there are two input fields: "UnLock Code:" and "UserName:". At the bottom left, it displays "Registration Number: 15B5-8C4A". On the bottom right, there are "OK" and "Cancel" buttons.

Indexer Wizards

Trial Register

Thank you for choosing to register this product.

UnLock Code:

UserName:

Registration Number: 15B5-8C4A

OK

Cancel

Figure 9: Registration screen

Enter the distributor supplied unlock code and your name as supplied to the distributor into the two fields. Enter the information exactly as the distributor gave to you. Case is important. Press "OK". You will now see the Indexer Wizards main screen as shown in figure 10.

The Indexer Wizards is now registered and you will no longer see the screen shown in figure 8.

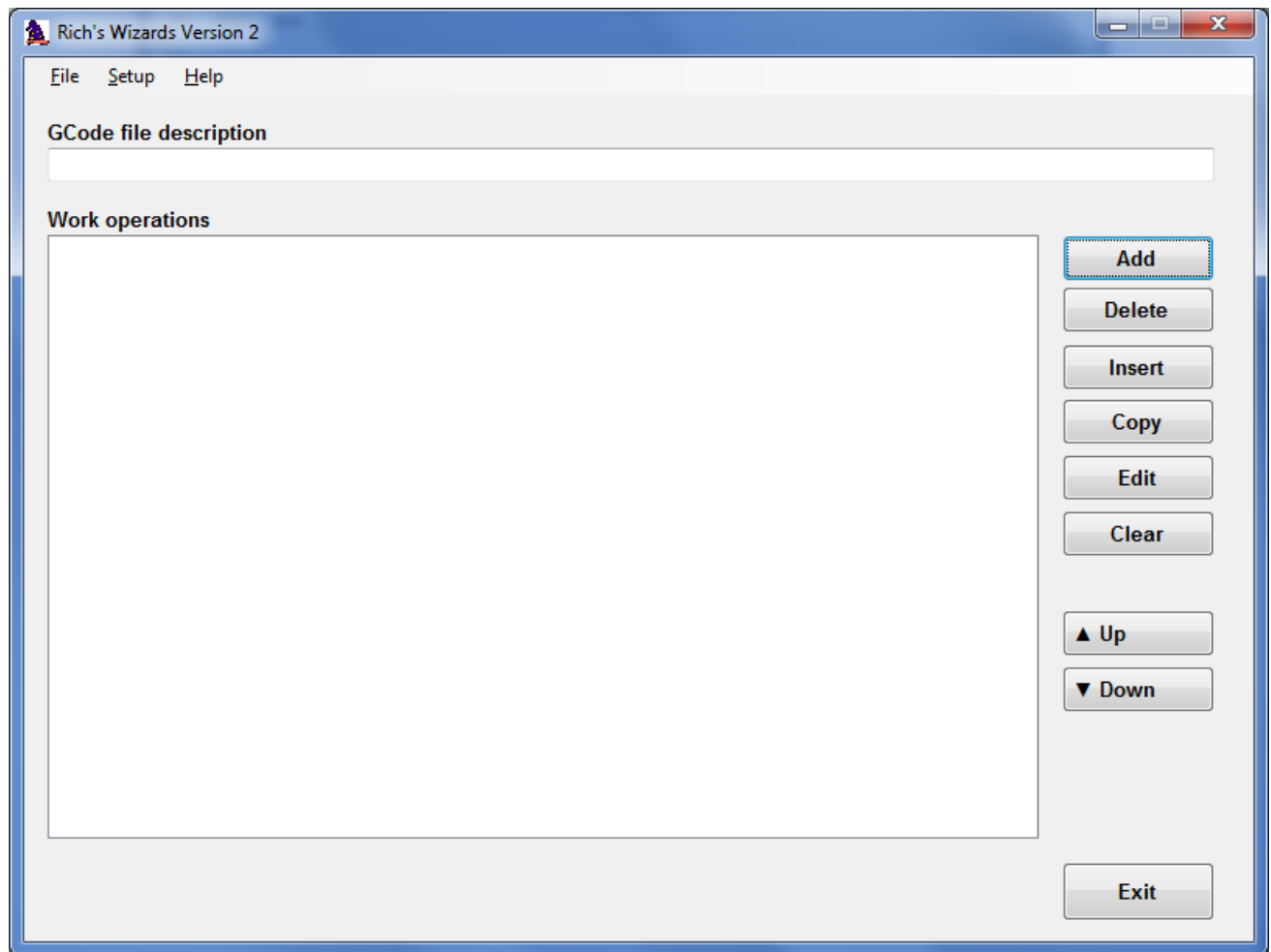


Figure 10: Indexer Wizards start screen

On the menu bar click Setup and then Setup options. This will show the setup screen as shown in figure 10.

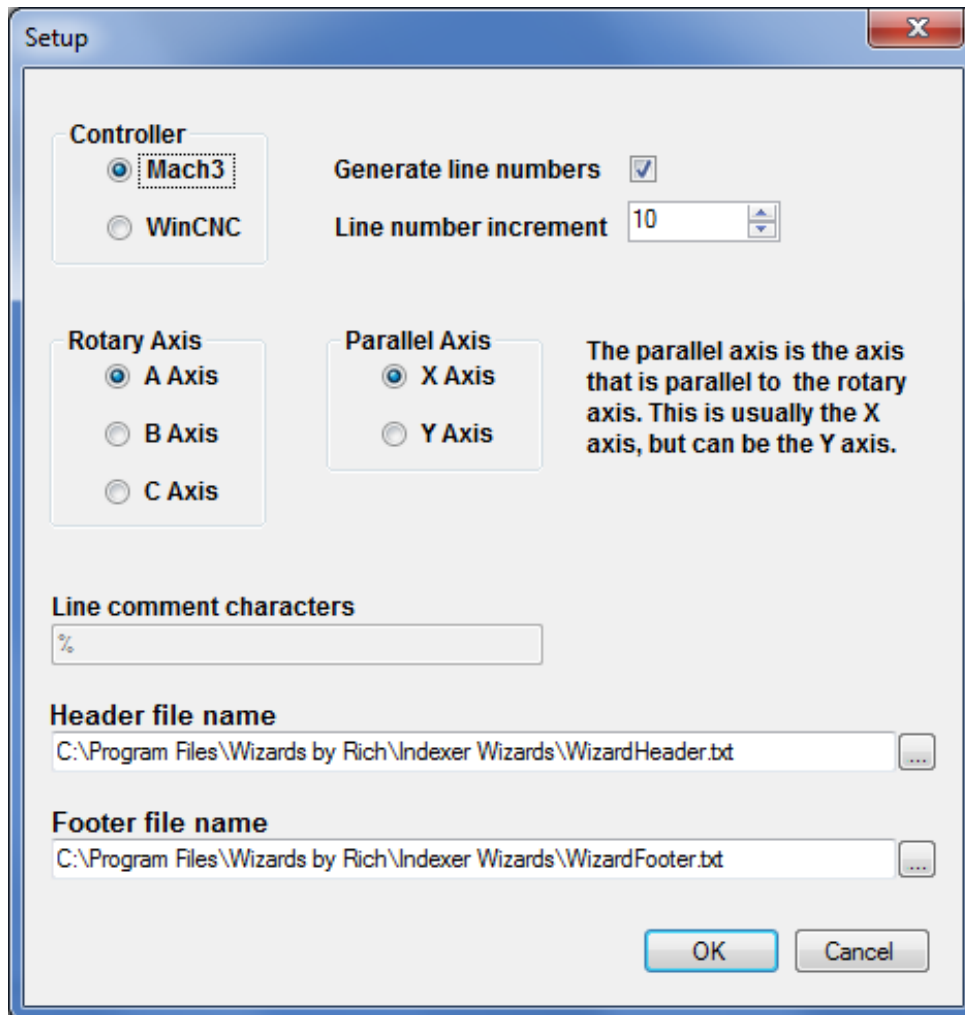


Figure 11: Setup screen

First, select the controller that you are using. Both Mach3 and WinCNC are supported. The gcode generated by the Indexer Wizards can automatically use line numbers if you wish. This is shown as the default above. You may select or unselect line number generation. If you are going to use line numbers you have to also select the increment to be used when generating the line numbers. Above, the default increment is ten.

Select the axis that is being used for your rotary axis. This is usually the A axis as shown above, but may also be the B or C axis. Next select the parallel axis. The parallel axis is the axis that is parallel to the rotary axis. This usually X, but may be Y.

If you are using WinCNC enter the list of comment characters that you use. As a default the standard WinCNC comment characters are entered.

The Indexer Wizards generate header and footer gcode in every gcode file. This code performs setup operations like making sure that the machine is using absolute mode instead of incremental mode. The footer gcode stops the spindle and ends the program. In advanced topics you will learn how to modify this code for your specific needs. The files that hold this code are specified on the setup screen as shown above. The path and files shown are the default. You may change them as you like. Press OK to finish the setup of the Indexer Wizards.

Changes in Version 2.1.1 from Version 2.1

1. The Tool Change work operation now has a field to set the spindle speed.
2. A demo version of the Indexer Wizards is now available. This is a full version with no restrictions except that it will only work for seven days after installation.
3. Registration is now required. A registered version of the Indexer Wizards will only run on the computer for which it was registered.

Requirements

The Indexer Wizards are written to work with Mach3 or WinCNC. They will most likely not work with other CNC controllers. You must be running Mach3 version 3.042.029 or later lockdown Mach3 versions or WinCNC version 2.4.09 or later. The Indexer Wizards should be able to run on most Windows XP, Vista or Windows 7 computers.